



Skin Condition EVALUATION

INTRODUCTION

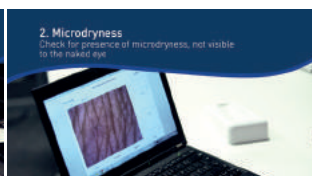
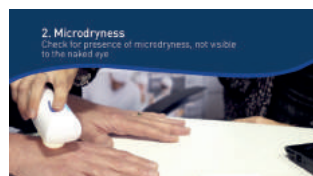
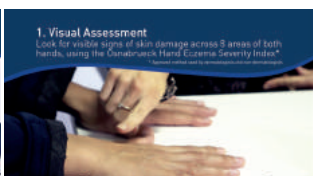
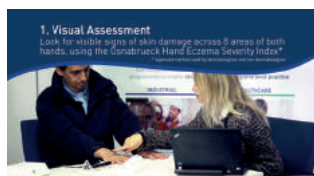
Skin condition evaluations can make a significant contribution to raising awareness of skin health and promoting in particular the use of skin protection and skin care products.

The Deb Safe Skin Condition Evaluation uses dermatologically recognised devices and assessment methods to measure the skin condition of workers' hands and evaluate the risk of developing future skin issues. The evaluation is designed to enable employers to better understand the skin condition of their workforce, and encourages workers to become more aware of their skin condition.

Through repeat testing, the evaluation enables employers to monitor changes in workers' skin condition over time and to help identify any requirements for further skin care interventions.

THE EVALUATION PROCESS

For each individual participant, the evaluation is comprised of a short questionnaire, followed by six individual measures of the skin condition on the hands only; these measures are:



1. VISUAL ASSESSMENT

The Visual Assessment uses the Osnabrück Hand Eczema Severity Index (OHSI) to look for signs of skin damage. This is a recognised method of evaluating occupational skin issues designed for use by dermatologists and occupational practitioners.

2. MICRO-DRYNESS

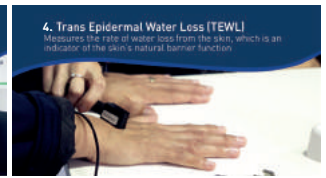
A Visioscope is used to determine whether a worker has skin dryness that is not visible to the naked eye (i.e. micro-dryness).





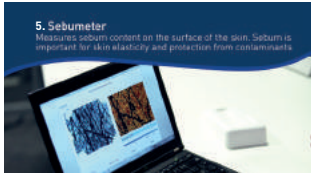
3. MOISTURE CONTENT

A Corneometer is used to measure the moisture content of the stratum corneum, the outermost layer of the skin. This gives an indication of the hydration level of the skin.



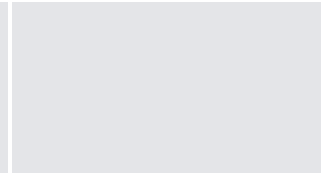
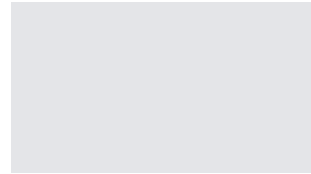
4. TRANSEPIDERMAL WATER LOSS

A Tewameter is used to measure the rate of transepidermal water loss from the stratum corneum, the outermost layer of the skin – a higher rate of water loss can mean a reduction in the skin’s barrier function and natural ability to retain water.



5. SEBUM CONTENT

A Sebumeter is used to measure the sebum and oil content in the skin.



6. DESQUAMATION

Desquamation gives an indication of the scaliness level (dryness) of the outermost layer of the skin and the nature of the skin structure.



Each evaluation will take approximately **15 minutes** and at the end of the evaluation, each worker participant receives a confidential 'Individual Report' summary of their results with some useful advice on how to care for their skin and a sample of after work restore cream.

This evaluation is carried out by staff who are trained in conducting this evaluation but who are not medical professionals. It should not be seen as a medical diagnosis.

SKIN CONDITION EVALUATION REPORT FOR THE ORGANISATION

Following the Deb Safe Skin Evaluation, the data for each of the tests is summarised into a comprehensive Skin Condition Evaluation Report for the organisation.

The Report contains the Deb Skin Condition Risk Factor Score for the organisation. This Factor is calculated using a unique formula which combines all the individual measures of the Skin Condition Evaluation to provide an overall score that is representative of the workers’ skin condition for the whole organisation.

This score helps indicate the need for further interventions in order to minimise any future risk.

The report can include data summarised in organisation zones* to provide more detailed feedback on skin condition in specific areas, so that products, training and interventions can be tailored to more specific needs where applicable.

A MINIMUM OF **45 WORKER PARTICIPANTS** IS REQUIRED FOR THE REPORT TO BE STATISTICALLY REPRESENTATIVE FOR THE WHOLE ORGANISATION.

0	1	2	3	4	5	6	7	8	9	10
GOOD SKIN CONDITION			MINOR SKIN ISSUES		MODERATE SKIN ISSUES			SEVERE SKIN ISSUES		
Overall, your workers' hand skin condition is good.			Overall, your workers' hand skin condition is satisfactory, however there are some signs of skin damage within the group tested.		Overall, your workers' hand skin condition is unsatisfactory. There are many signs of skin damage within the group tested.			Overall, your workers' hand skin condition is very poor. There are many signs of severe skin damage on the hands for the majority of the group tested.		

*Minimum 5/10 employees per zone